



Roller Doors

If you're ready to draw the line at average and reach for better call us today.

To locate Steel-Line branches across Australia call: **1300 427 243** or visit steel-line.com.au

Easy to use and long lasting, Steel-Line's garage roller doors can be made to suit almost any size opening. Combine this with a range of Colorbond® colours and smooth operation, Steel-Line garage roller doors become true design features of your home.

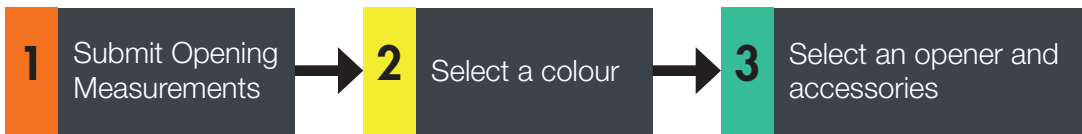
Our garage roller doors combine a unique profile with first class materials making them the strongest, quietest and most reliable doors available.

Manufactured with heavy duty bottom rails containing durable PVC weather seals, Steel-Line's garage roller doors provide your precious garage contents with excellent protection from the harsh elements including wind, rain and dust.



All Steel-Line roller doors can be automated with a quality approved automatic opener. As a market leader in safety and innovation, all Steel-Line approved openers include a range of safety and convenient features. The standard 'Auto Reverse System' causes the garage door to immediately stop and reverse when it comes into contact with an object, while the optional extra, 'Photo Eye' feature automatically reverses the closing garage door if its electronic beam senses an obstruction.

3 easy steps to order your roller door



1 Submit Opening Measurements

In placing an order you will be required to submit the following information.

The range of available sizes in “A” series, “AA” series and “B” series:

“A” series residential door

(Range from 750mm to 3430mm in width)

“A” Series Door Heights
Up to and including 1200mm
Up to and including 2100mm
Up to and including 2200mm
Up to and including 2400mm
Up to and including 2600mm
Up to and including 2700mm
Up to and including 3000mm

“AA” series residential door

(Range from 3435mm to 5500mm in width)

“AA” Series Door Heights
Up to and including 2200mm
Up to and including 2400mm
Up to and including 2600mm
Up to and including 2700mm
Up to and including 3000mm

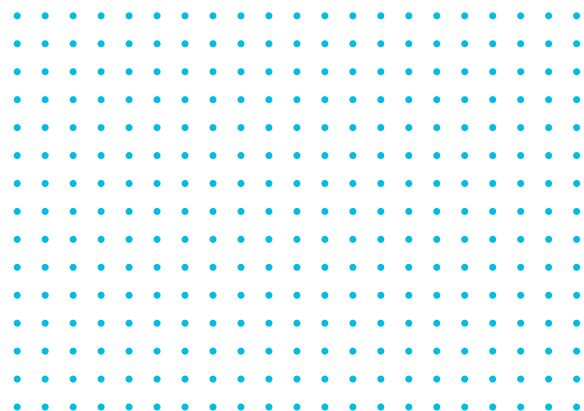
“B” series light industrial door

(Range from 2855mm to 5500mm in width)

“B” Series Door Heights
Up to and including 3300mm
Up to and including 3600mm
Up to and including 4200mm
Up to and including 4800mm
Up to and including 5100mm

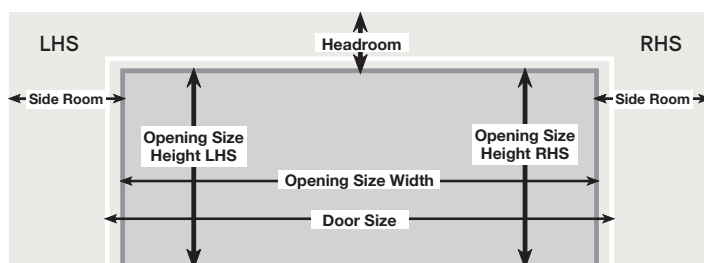
Description	Measurements
Opening Size Height LHS	
Opening Size Height RHS	
Opening Size Width	
Side Room LHS	
Side Room RHS	
Headroom	

Door Size - Width	“A” series = Opening Size + 50mm
	“AA” series = Opening Size + 100mm
	“B” series = Opening size + 100mm
Door Size - Height	Refer to “A” series and “AA” series and “B” series above
Side Room - Manual	“A” series = 90mm minimum
	“AA” series = 125mm minimum
	“B” series = 185mm minimum
Side Room - With Automatic Opener	“A” series = 120mm minimum
	“AA” series = 150mm minimum
	“B” series = 150mm minimum*
Headroom - Minimum	“A” and “AA” series = 430mm-510mm*
	“B” series = up to 570mm*
Restricted - Headroom	= door opening height may be restricted



NOTE: The above table is a guide only and some dimensions may change.

* Please refer to Steel-Line Roller Door Technical Data Sheet for more details.



(View from inside of garage, looking out)

2 Colour Options



NOTE: The colours shown are a guide only. The limitations of printing processes make extremely accurate matches impossible. We strongly recommend comparing your choice with actual samples. Additionally, Steel-Line reserves the right to vary or delete colours without notice.

3 A small additional investment for greater convenience

Roller Door Openers

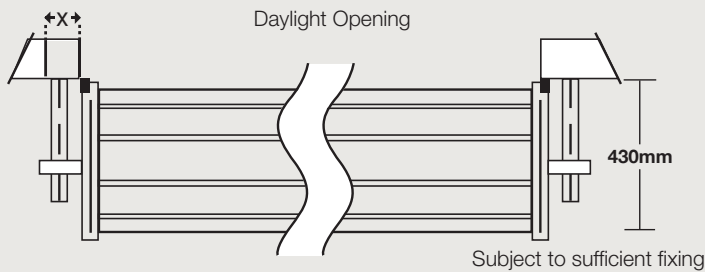
Fit your Steel-Line garage roller door with an automatic opener for hassle free entry to and exit from your garage or shed.

All of our openers are engineered to the highest standards ensuring easy operation, optimum performance, long life and peace of mind.

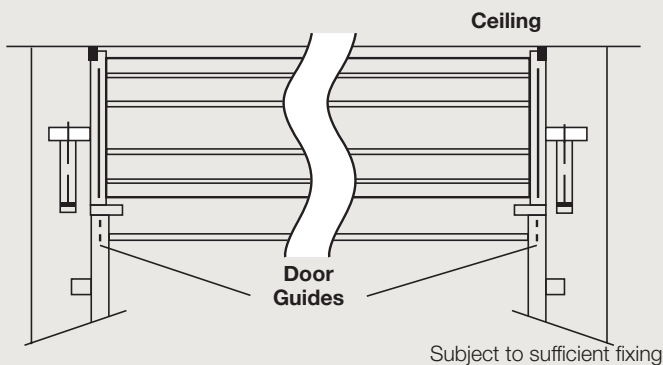


Floor Plan Views

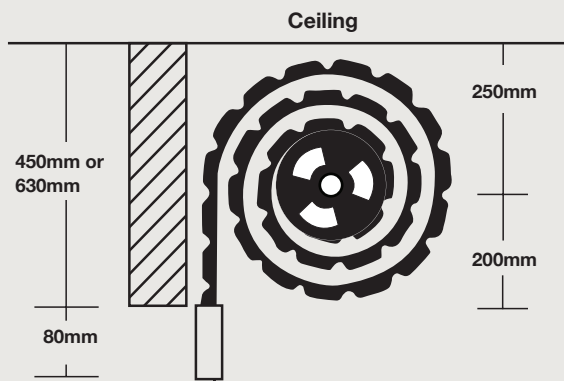
X = Structural support minimum "A" series 75mm, "AA" series 100mm, "B" series 100mm



Plan View



View from Inside Looking Out



End View

Designed to be tough and durable

Steel-Line's range of roller doors is the benchmark for style and quality in Australian garage doors. The following technical features ensure that your Steel-Line garage door will operate efficiently for years to come.

Australian Made Steel

Steel-Line roller doors are made from genuine BlueScope Colorbond® and Zinalume*; top quality steel that stands the test of time.

Quality Drums and Springs

All Steel-Line garage doors revolve on precision-made drum wheels. Garage doors are counter-balanced using helical coil springs to ensure perfect balance and operation. All our springs are heat treated and tempered to give years of trouble free operation.

* BlueScope® Steel is our preferred supplier. However, we may use equivalent steel from an alternative supplier.

Superior, Unique Profile

The exclusive Steel-Line garage door curtain has a unique roll formed profile that is engineer-designed for superior strength, whilst maintaining a unique modern appearance sure to enhance the exterior of your home.

Optional Extras:

- Ventilated Profile - gives an effective airflow up to 9% for standard roller doors
- Tapered Bottom Panel - for garage floors that slope across the opening

Centre Lock

All Steel-Line residential garage roller doors have a factory fitted centre lift locks generally mounted waist high and operated by key externally. It also features an internal keyless manual override that offers a safe exit in an emergency.

Optional Extra:

- Windlock Clip - available for high wind areas

If you require a roller door for cyclonic regions, please refer to our Wind Rated Roller Door brochure, or contact your local Steel-Line branch for more details.

Dual-Sided Nylon Webbing

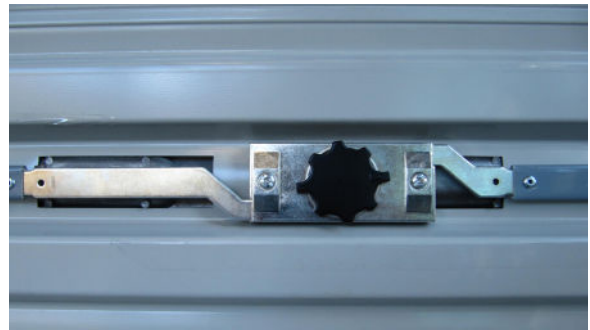
We apply nylon-fibre webbing to both sides of the garage door curtain eliminating metal-on-metal contact resulting in an extremely quiet and smooth operating door for years to come.

Aluminium Bottom Rail

An engineer-designed, heavy-duty extruded aluminium bottom rail is used to strengthen the bottom panel of the garage door. The bottom rail also incorporates a specially designed weather seal, extruded from tough and durable PVC to protect your garage from the harsh elements.



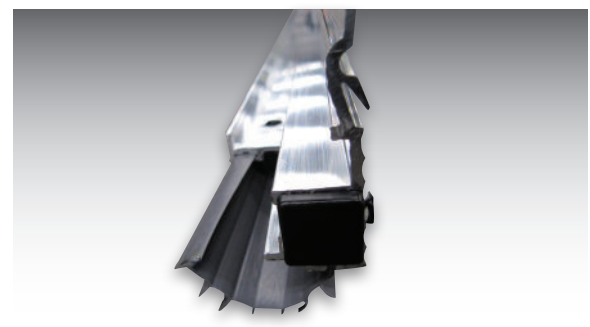
Roll Formed Profile



Centre Lock



Dual-sided Nylon Webbing



Aluminium Bottom Rail (Weather Seal)

Proudly distributed by: